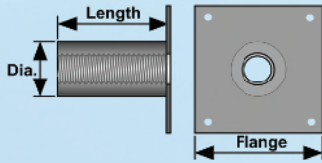


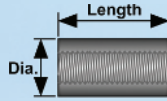
# BPI® BARSPLICER DATA SHEET– Dimensions and Data [inch-pound units]

BPI® BARSPLICER COUPLER WITH OPTIONAL FLANGE



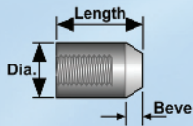
REBAR SIZE	THREAD SIZE	WEIGHT (lbs)	LENGTH (in)	DIAMETER (in)	FLANGE (in)	BEVEL (in)
4	1/2 – 13 UNC	0.28	1 3/4	7/8	2 x 2	–
5	5/8 – 11 UNC	0.35	2	1	2 x 2	–
6	3/4 – 10 UNC	0.40	2 1/8	1 1/8	2 x 2	–
7	7/8 – 9 UNC	0.50	2 1/2	1 1/4	2 x 2	–
8	1 – 8 UNC	0.90	3	1 1/2	2 x 2	–
9	1 1/8 – 7 UNC	1.50	3 1/2	1 3/4	3 x 3	–
10	1 1/4 – 7 UNC	2.35	4	2	3 x 3	–
11	1 3/8 – 6 UNC	2.40	4 1/2	2	3 x 3	–

BPI® BARSPLICER COUPLER / POSITION COUPLER



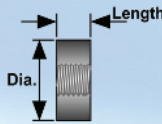
4	1/2 – 13 UNC	0.22	1 3/4	7/8	–	–
5	5/8 – 11 UNC	0.30	2	1	–	–
6	3/4 – 10 UNC	0.35	2 1/8	1 1/8	–	–
7	7/8 – 9 UNC	0.50	2 1/2	1 1/4	–	–
8	1 – 8 UNC	0.90	3	1 1/2	–	–
9	1 1/8 – 7 UNC	1.50	3 1/2	1 3/4	–	–
10	1 1/4 – 7 UNC	2.35	4	2	–	–
11	1 3/8 – 6 UNC	2.40	4 1/2	2	–	–

BPI® BARSPLICER STRUCTURAL CONNECTOR



4	1/2 – 13 UNC	0.15	1 3/8	7/8	–	3/16
5	5/8 – 11 UNC	0.20	1 1/2	1	–	1/4
6	3/4 – 10 UNC	0.40	1 3/4	1 1/4	–	1/4
7	7/8 – 9 UNC	0.50	2	1 3/8	–	5/16
8	1 – 8 UNC	0.85	2 1/4	1 5/8	–	3/8
9	1 1/8 – 7 UNC	1.05	2 5/8	1 3/4	–	7/16
10	1 1/4 – 7 UNC	1.50	3	2	–	1/2
11	1 3/8 – 6 UNC	1.55	3 3/8	2	–	9/16

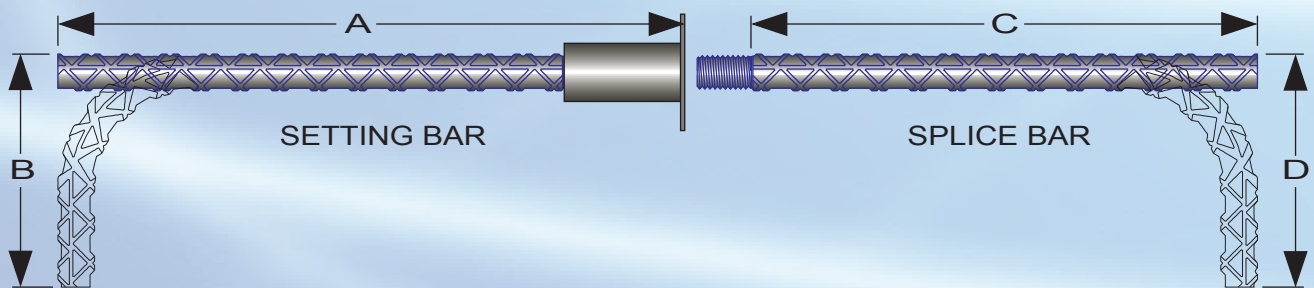
BPI® BARSPLICER DoughNUT™



4	1/2 – 13 UNC	0.22	3/4	1 1/4	–	–
5	5/8 – 11 UNC	0.37	7/8	1 1/2	–	–
6	3/4 – 10 UNC	0.55	15/16	1 3/4	–	–
7	7/8 – 9 UNC	0.95	1 1/4	2	–	–
8	1 – 8 UNC	1.42	1 5/16	2 3/8	–	–
9	1 1/8 – 7 UNC	2.15	1 1/2	2 3/4	–	–
10	1 1/4 – 7 UNC	2.50	1 5/8	2 7/8	–	–
11	1 3/8 – 6 UNC	3.75	1 7/8	3 1/4	–	–

## HOW TO ORDER BPI® BARSPLICER SETTING AND SPLICE BARS

The most commonly used splice and setting bars are STRAIGHT or have a 90 DEGREE HOOK as follows...



The following chart is an easy way to organize your BPI Barsplicer requirements. Many other configurations can be ordered as shown on the BPI Barsplicer configuration chart... just include the BPI PART NUMBER for easy reference.

QUANTITY	BAR SIZE	BLACK OR EPOXY	SETTING BARS				SPLICE BARS					
			FLANGE Y/N	BPI PART NUMBER See Chart	SPECIFY LENGTHS (FEET - INCHES)			BPI PART NUMBER See Chart	SPECIFY LENGTHS (FEET - INCHES)			
					'A'	'B'	OTHER		'C'	'D'	OTHER	
					–	–	–			–	–	–
					–	–	–			–	–	–
					–	–	–			–	–	–
					–	–	–			–	–	–
					–	–	–			–	–	–

Unless otherwise specified, bars shall be ASTM A615 / A615M Grade 60; epoxy coated bars shall be ASTM A775 / A775M Grade 60; bend diameters and standard hook dimensions shall be per ACI Detailing Manual SP-66; length tolerances shall be per the CRSI Manual of Standard Practice. Customer is responsible for notifying BPI of any special space restrictions, tolerance, bar grade, coating thickness and/or strength requirements before placing order. All fabricated and/or in-process setting bars, splice bars and parts are non-cancellable and non-returnable. While the information contained in this document is believed to be accurate at the time of publication, BPI reserves the right to make changes, design modifications, corrections and other revisions as it sees fit, without notice. All products described herein are supplied in accordance with BPI's standard Terms and Conditions of Sale. This document is of a promotional nature only. Aspects of structural design, evaluation of product fitness for use, suitability or similar attributes are the responsibility of others.

# BPI® BARSPLICER CONFIGURATION CHART

The following chart shows the dimensions to specify when ordering setting and splice bars. Other configurations can be manufactured to order... just fax or e-mail a sketch to Barsplice Products, Inc. with your requirements.

SETTING BAR OPTIONS AND PART NUMBERS	
BS-B	<b>STRAIGHT</b> Specify 'A'
BS-F	<b>90° BEND</b> Specify 'A' & 'B'
BS-E	<b>180° HOOK</b> Specify 'A'
BS-C	<b>45° BEND</b> Specify 'A' & 'B'
BS-Q	<b>135° BEND</b> Specify 'A' & 'B'
BS-A	<b>DOUBLE END</b> Specify 'A'
BS-D	<b>U-SHAPE DOUBLE END</b> Specify 'A' & 'B'
BS-J	<b>POSITIONAL STRAIGHT</b> Specify 'Ap'
BS-K	<b>POSITIONAL 90° BEND</b> Specify 'Ap' & 'B'
BS-S	<b>HEADED STRAIGHT</b> Specify 'A'

SPLICE BAR OPTIONS AND PART NUMBERS	
BS-H	<b>STRAIGHT</b> Specify 'C'
BS-G	<b>90° BEND</b> Specify 'C' & 'D'
BS-I	<b>180° HOOK</b> Specify 'C'
BS-P	<b>45° BEND</b> Specify 'C' & 'D'
BS-R	<b>135° BEND</b> Specify 'C' & 'D'
BS-O	<b>DOUBLE END</b> Specify 'C' & 'Z'
BS-N	<b>CONTINUITY DOUBLE END</b> Specify 'C'
BS-L	<b>POSITIONAL STRAIGHT</b> Specify 'Cp'
BS-M	<b>POSITIONAL 90° BEND</b> Specify 'Cp' & 'D'
BS-T	<b>HEADED STRAIGHT</b> Specify 'C'

Unless otherwise specified, bars shall be ASTM A615 / A615M Grade 60; epoxy coated bars shall be ASTM A775 / A775M Grade 60; bend diameters and standard hook dimensions shall be per ACI Detailing Manual SP-66; length tolerances shall be per the CRSI Manual of Standard Practice. Customer is responsible for notifying BPI of any special space restrictions, tolerance, bar grade, coating thickness and/or strength requirements before placing order. All fabricated and/or in-process setting bars, splice bars and parts are non-cancellable and non-returnable. While the information contained in this document is believed to be accurate at the time of publication, BPI reserves the right to make changes, design modifications, corrections and other revisions as it sees fit, without notice. All products described herein are supplied in accordance with BPI's standard Terms and Conditions of Sale. This document is of a promotional nature only. Aspects of structural design, evaluation of product fitness for use, suitability or similar attributes are the responsibility of others.



BarSplice Products, Inc., 4900 Webster Street, Dayton OH 45414, USA  
 ● Tel: (937) 275-8700 ● Fax: (937) 275-9566 ● E-mail: bar@barsplice.com

Copyright © 2012-2016, Barsplice Products, Inc., "BPI". All rights reserved.

